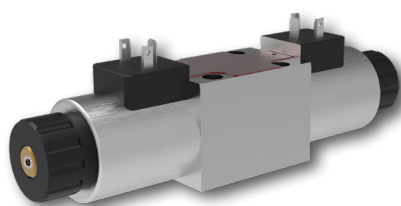
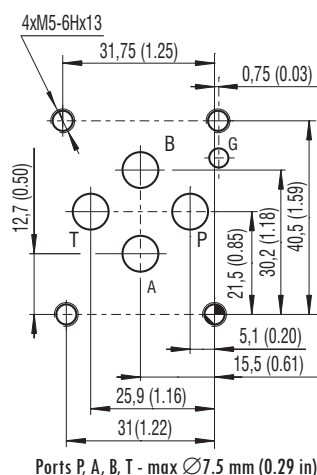


4/2 and 4/3 Directional Control Valve, Solenoid Operated
RPEJ1-06

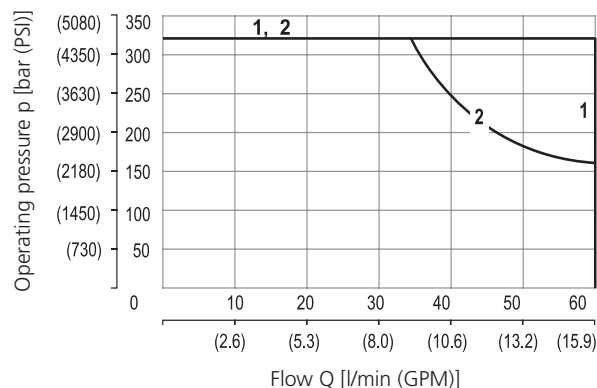
 Size 06 (D03) • Q_{max} 60 l/min (16 GPM) • p_{max} 320 bar (4600 PSI)

Technical Features

- › Direct acting directional control valve with subplate mounting interface acc. to ISO 4401, DIN 24340 (CETOP 03)
- › Five chamber valve design for high transmitted hydraulic power
- › Decreased dependence of function on fluid viscosity
- › The coil, fastened to the core tube with a retaining nut, can be rotated by 360° to suit the available space
- › Range of interchangeable spools
- › In the standard version, the valve housing is phosphated for basic surface corrosion protection and as preparation for painting. Steel parts are zinc-coated for 240 h salt spray protection acc. to ISO 9227

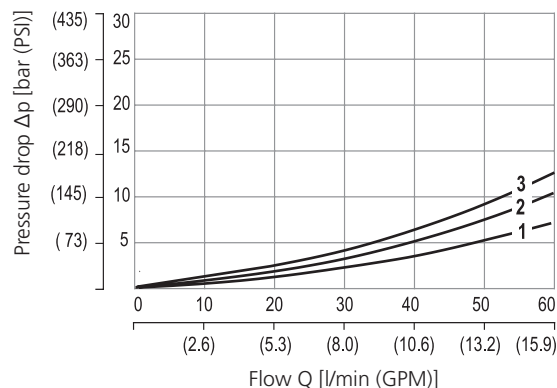
ISO 4401-03-02-0-05

Technical Data

Valve size		06 (D03)
Max. flow	l/min (GPM)	60 (15.8)
Max. operating pressure at ports P, A, B	bar (PSI)	320 (4640)
Max. operating pressure at port T	bar (PSI)	100 (1450)
Fluid temperature range (NBR)	°C (°F)	-20 ... +60 (-22 ... +140)
Ambient temperature range	°C (°F)	-20 ... +50 (-22 ... +122)
Kinematic viscosity	mm ² /s (SUS)	10 ... 100 (49 ... 487st)
Supply voltage tolerance	%	DC ±10
Max. switching frequency	1/h	10 000
Switching time at $v=32$ mm ² /s (156 SUS)	ON	ms
	OFF	ms
Weight	- valve with 1 solenoid	kg (lbs)
	- valve with 2 solenoids	kg (lbs)
Datasheet		Type
General information	GI_0060	Products and operating conditions
Mounting interface	SMT_0019	Size 06
Subplates	DP_0002	DP*-06

Characteristics measured at $v = 32$ mm²/s (156 SUS)

Operating limits - Power limit characteristics valid for 80% of nominal current.


Spool symbol	
1	Z11, Z51, R11, X11
2	Y11

Pressure drop related to flow rate


Spool symbol	P-A	P-B	A-T	B-T
Z11, R11, X11	2	2	3	3
Y11	2	2	2	2
Z51		2	3	

For operating limits under conditions and flow directions other than shown contact our technical support.

Spool Symbols

Type	Symbol	Interposition	Type	Symbol	Interposition	Type	Symbol	Interposition
Z11			Z11			Z51		
Y11			Y11			R11		
			X11					

