

## CBKP

Single Gear Pump with roller bearing

Size: 32cc to 100cc

Max Pressure: 250Bar



Introduction	Contents	Page No.
<ul style="list-style-type: none"><li>• The housing made of liquid extrusion processing has a strong bearing capacity.</li><li>• Adopting high strength alloy steel gear to maintain high reliability and long lifetime of gear pump.</li><li>• Adopting high strength roller bearing to improve the capacity of resisting overload and pollution.</li><li>• The connection form of input shaft includes flat key, rectangle spline, SAE spline and metric system involute spline.</li><li>• The automatic compensation mechanism of axial clearance enables gear pump to maintain a long-time high efficiency work.</li><li>• It is widely applied in the industry of engineering machinery.</li></ul>	Introduction	01
	Ordering code	02
	Technical Data	02
	Performance Graph	02
	Unit Dimensions	03

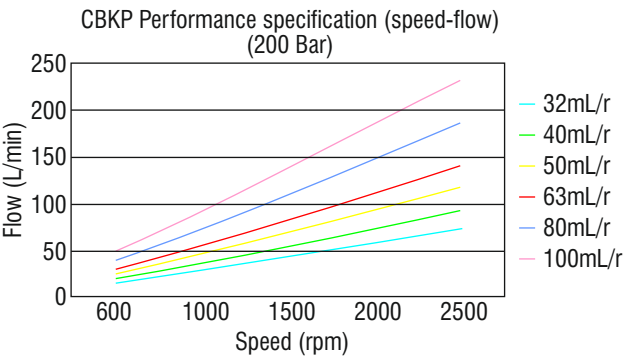
Ordering code

	CBKP	*	—	B	F	*	*
<b>CBKP-Single Gear pump with roller bearing</b>							
<b>Nominal Displacement (mLr):</b> 32, 40, 50, 63, 80, 100							
<b>Mounting:</b> Square				= B			
<b>Jointing Port:</b> Flange					= F		
<b>Shaft End:</b> Plain key SAE Spline Rectangular Spline Involute Spline						= P = Ø = H = X	
<b>Rotation:</b> Left (counter clockwise) Right (clockwise is omitted)							= L = R

Technical Data

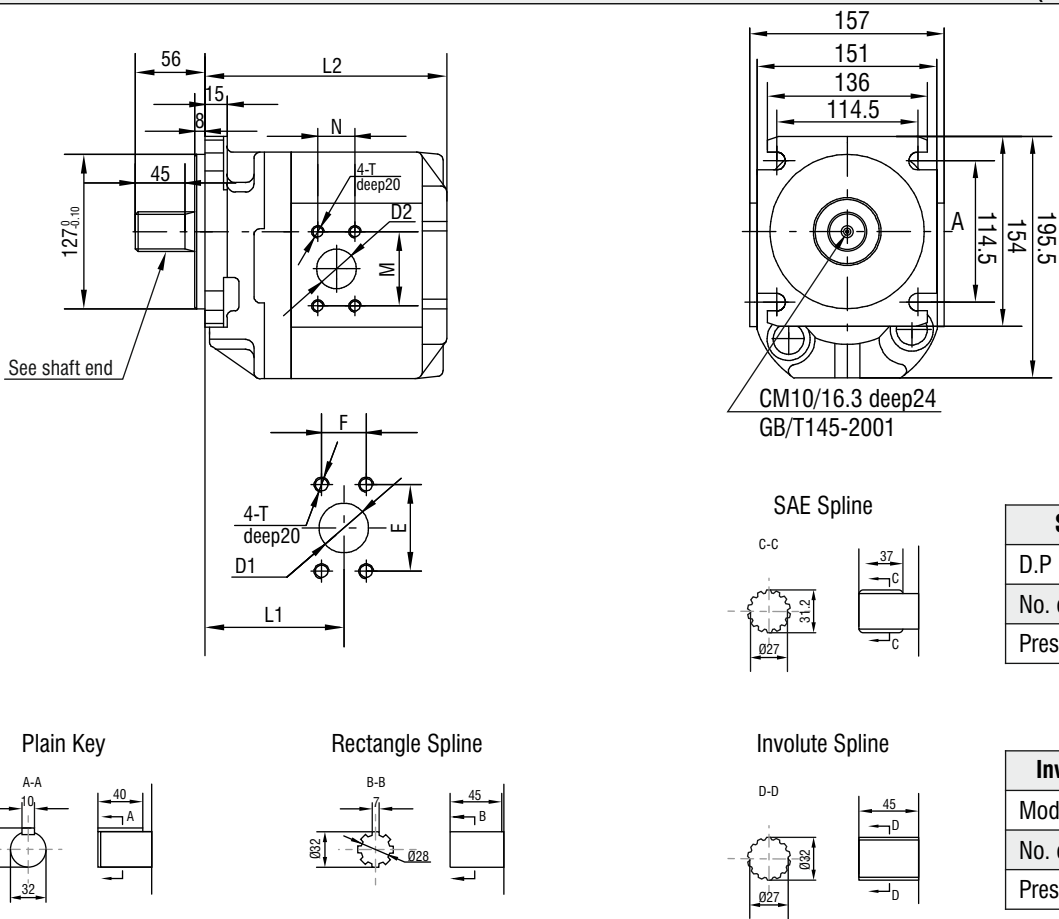
Model	Nominal Displacement (mL/r)	Pressure (Bar)		Speed (r/min)			Volumetric efficiency (> %)
		Rated	Max	Min	Rated	Max	
CBKP32-BF**	32	200	250	500	2000	2500	90
CBKP40-BF**	40						
CBKP50-BF**	50						
CBKP63-BF**	63						
CBKP80-BF**	80						
CBKP100-BF**	100						

Performance Graph

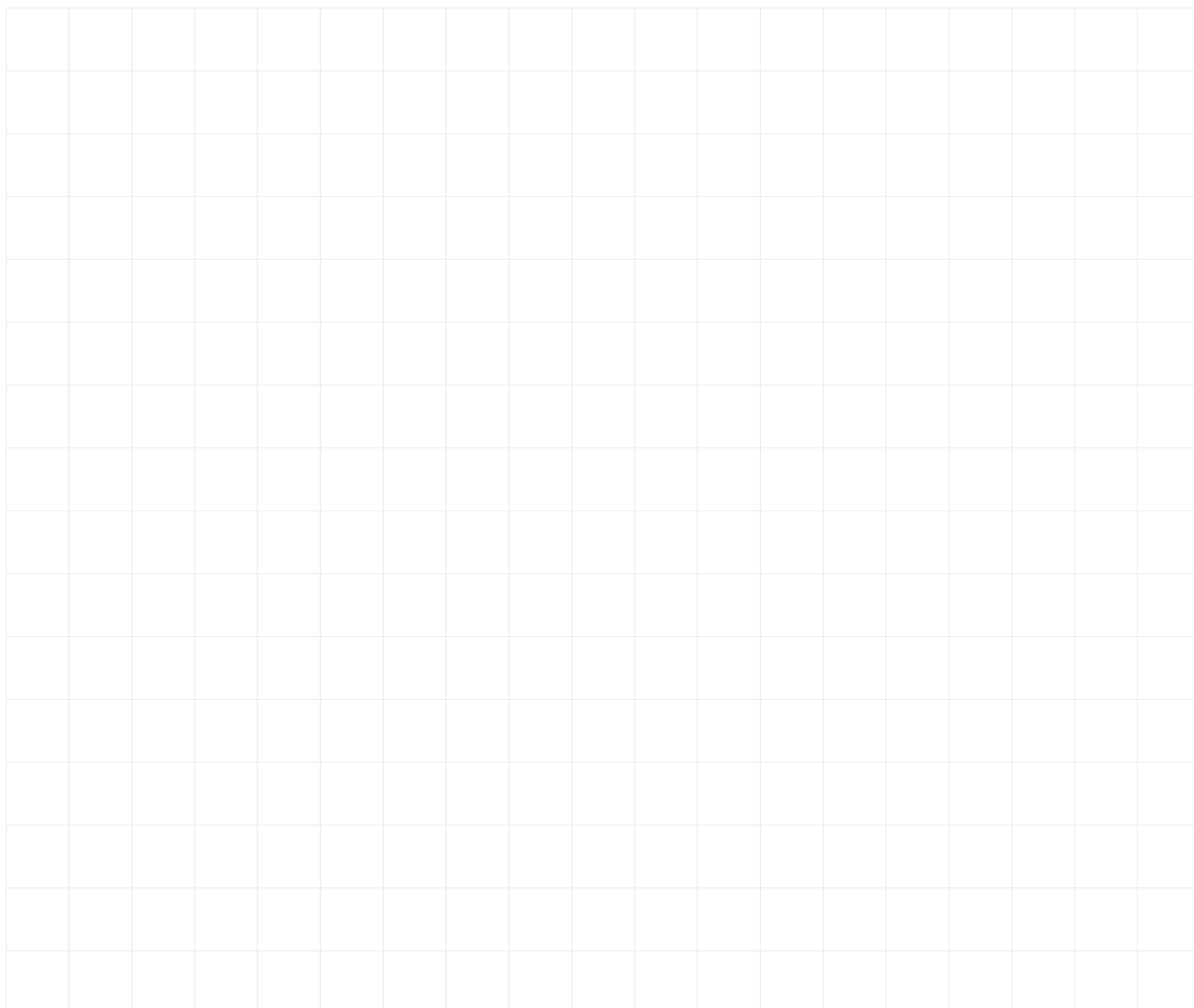


Unit Dimensions

(Dimensions in mm)



Model	L1	L2	Inlet			Outlet		Weight (Kg)
			D1	E x F	T	D2	M x N	
CBKP32-BF**	104	160	Ø32	60 x 30	M10	Ø25	52 x 26	12.5
CBKP40-BF**		163.5						12.7
CBKP50-BF**		168.5						13
CBKP63-BF**		174						13.3
CBKP80-BF**	107	183	Ø35	70 x 36	M12	Ø32	60 x 30	14
CBKP100-BF**	112.5	193	Ø40					14.5



The specified data is for product description purposes only and may not be deemed to be guaranteed unless expressly confirmed in the contract.



**THM Huade Hydraulics Pvt. Ltd.**

F-127, Phase-VIII, Focal Point,  
Ludhiana-141010, Punjab (INDIA)

Tel: 0161-2672777/78

E-mail: [sales@thmhuade.com](mailto:sales@thmhuade.com), [support@thmhuade.com](mailto:support@thmhuade.com)

Website: [www.thmhuade.com](http://www.thmhuade.com)