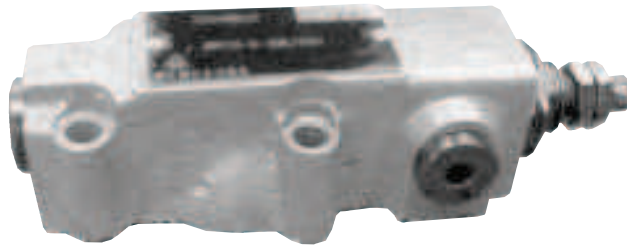


BEIJING HUADE HYDRAULIC INDUSTRIAL GROUP CO.,LTD.	Pressure remote relief valve, types DBT/DBWT		RE 25833/12.2004
	up to 31.5 MPa	up to 3L/min	Replaces: RE 25833/05.2001

Features:

- long distance remote control
- subplate mounting
- three adjustment elements:
 - Rotary knob
 - Hex. head screw with protective cap
 - Lockable rotary knob with scale



Function, section, symbols

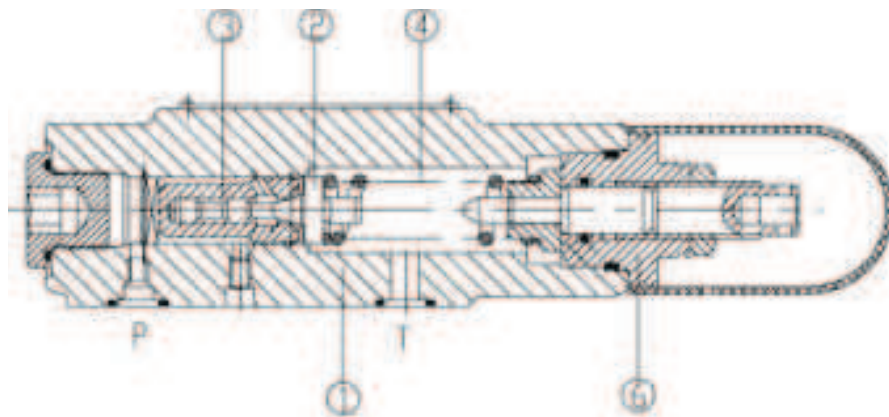
Types DBT and DBWT remote control pressure valves are pilot operated pressure relief valves.

Type DBT is apply to remote control the pressure of system.

Type DBT :

Type DBT consist mainly of the main valve (1), main spool (2), valve seat (3), and adjustment (6).

The pressure of system acts on the spool(2) via orifice. If the pressure exceeds the valve set at the spring, the pressure fluid drain to tank from port T(or drain external).



Type DBT...30/...

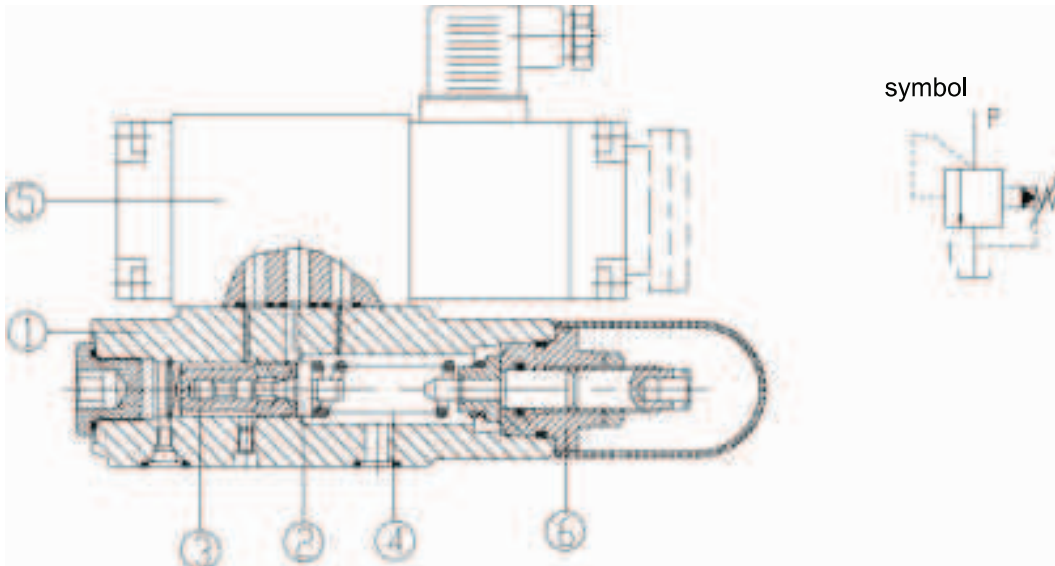
Symbol



Type DBWT:

Type DBWT consist mainly of the main valve (1), main spool (2), valve seat (3), electrically operated valve (5), and adjustment (6).

Type DBWT is apply to remote control the pressure of system and drain by actuating the electrically operated valve.



Type DBWT

ordering details

DB		T		- 30	B	/						*
----	--	---	--	------	---	---	--	--	--	--	--	---

Without electrically operated valve =No code
With electrically operated valve =W

Further details in clear text

Normally closed = A
Normally open = B

No code = mineral oils
V = phosphate ester

Rotary knob = 1
Sleeve with hexagon and protective cap = 2
Lockable rotary knob with scale = 3

No code = British
2 = Metric

Series 30 to 39 (30 to 39:
unchanged installation and connection dimensions) =30

Z4 = Plug-in connector
Z5 = Large Plug-in connector
Z5L = Large Plug-in connector with light

Technology of Beijing Huade Hydraulic = B

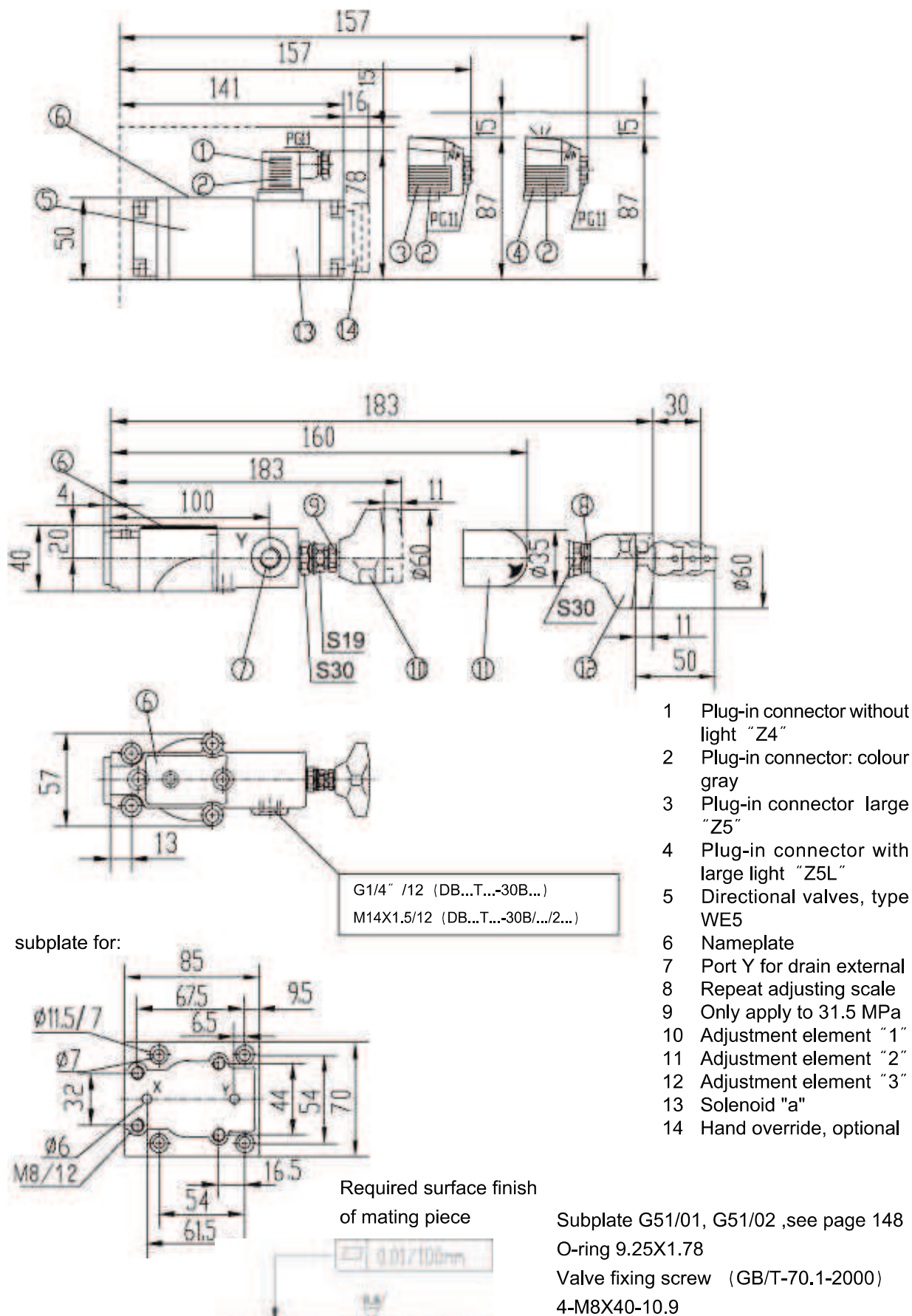
No code = Without hand override
N = With hand override

Settable pressure up to 10 MPa = 100
Settable pressure up to 31.5 MPa = 315

W220-50 = 220V 50Hz AC
G24 = 24 V DC
W220R =Solinoid commuting automatically 220V AC

Technical data

Pressure fluid		Mineral oil (for NBR seal),or phosphate ester (for FPM seal)
Temperature range (°C)		-30~ +80
Viscosity range (mm²/S)		10~800
max. flow (L/min)		3
max. operating pressure (MPa)		31.5
max. Setting pressure (MPa)		up to10 or 31.5
Back pressure	DBT (MPa)	up to 31.5
	DBWT (MPa)	up to 10 (AC) ; up to 16 (DC)
Pilot valve		see directional valve WE5



Notice

1. The fluid must be filtered. Minimum filter fineness is 20 μm .
2. The tank must be sealed up and an air breather/filter must be installed on air suction/entrance.
3. Subplate are not supplied, if required, please ordering separately.
4. Valve fixing bolts/screws must be high tensile (class 10.9). Please select and consult manufacturer according to the parameter listed in the datasheet.
5. Roughness of surface mating with the valve is required to $\sqrt{0.8}$.
6. Surface straightness of mating piece is required to 0.01/100mm.

All rights reserved-Subject to revision

THM Huade Hydraulics (P) Ltd

F-127, Focal Point, Phase VIII

Ludhiana-141010, India

Phone: 0091+161+2672777, Fax: 0091+161+2672778

www.thmhuade.com

info@thmhuade.com, sales@thmhuade.com