

[illegible]

# THM HUADE HYDRAULICS PVT LTD

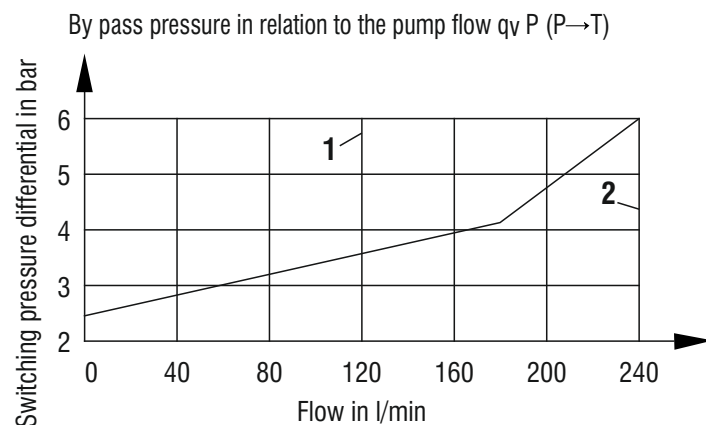
## DAW30A-2-30T/160G24N9K4Z5L

Pilot Operated (Solenoid Operated) Unloading Relief Valve

### Specifications:

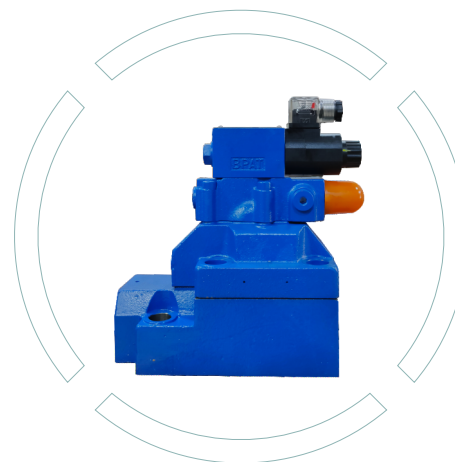
Size			30
Maximum flow	10%	l/min	120
	17%	l/min	240
Operating pressure port A	bar		315
Maximum Settable pressure	bar		up to 50, up to 100, up to 200, up to 315
Pressure Fluid			Mineral Oil For NBR seal Phosphate ester For FKM Seal
Viscosity range	mm <sup>2</sup> /s		10~800
Pressure fluid temperature range	°C		-30 to +80
Weight	kg		13.5

### Characteristic Curves:

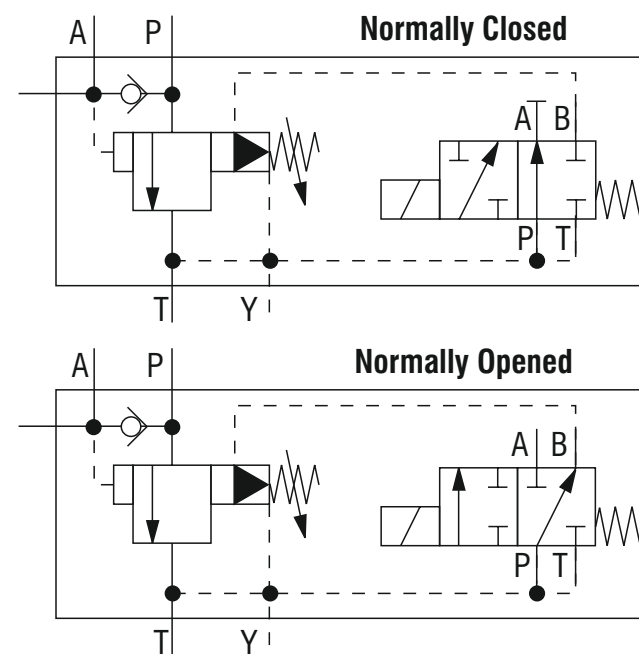


1.  $q_{v \max}$  for 10% version
2.  $q_{v \max}$  for 17% version

These characteristic curves are valid for an outlet pressure (T) = zero over the entire flow range.

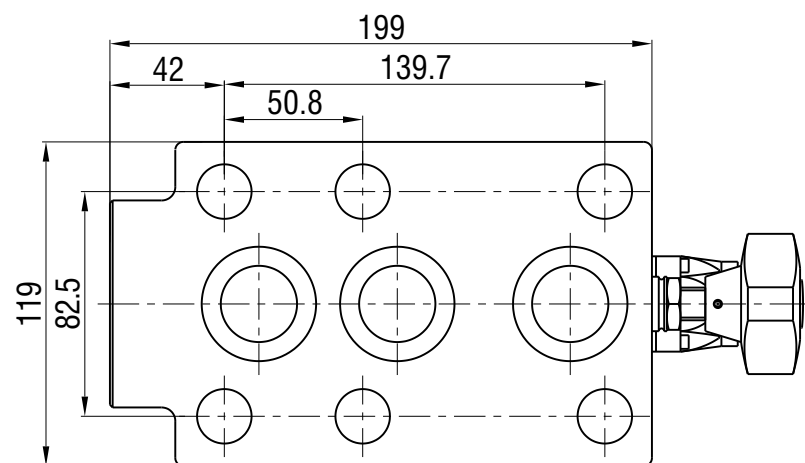


### Graphic Symbol:

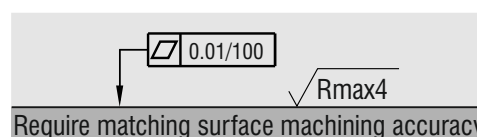
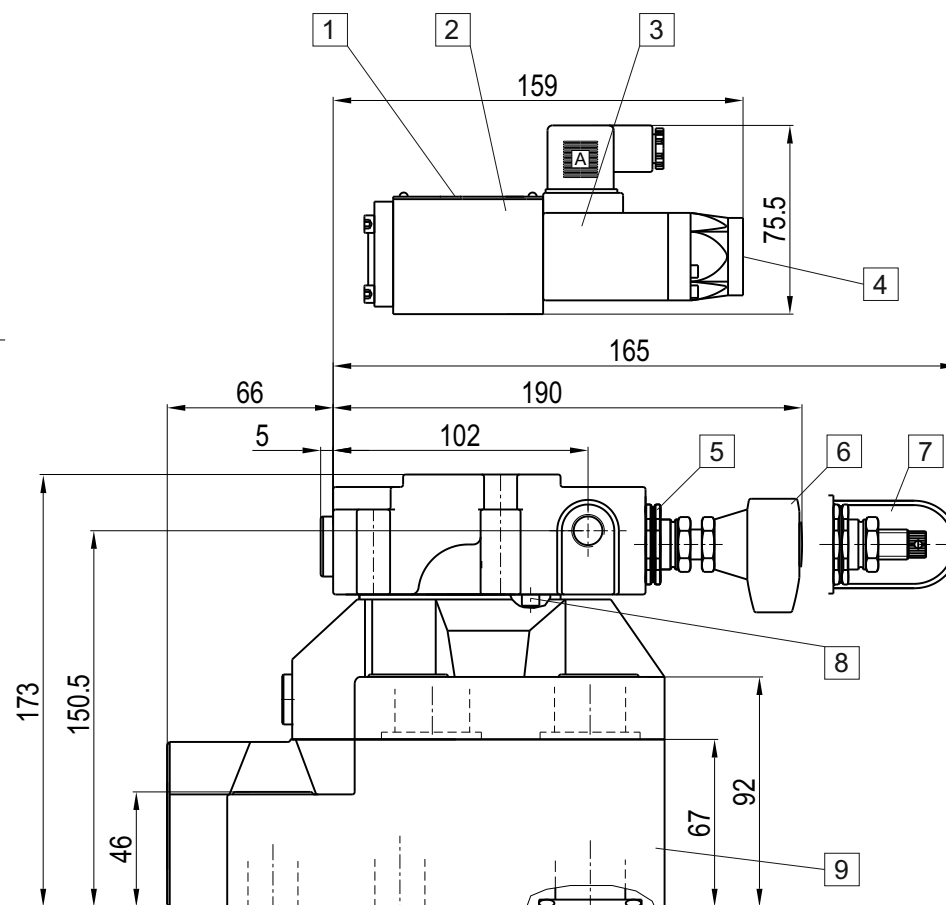
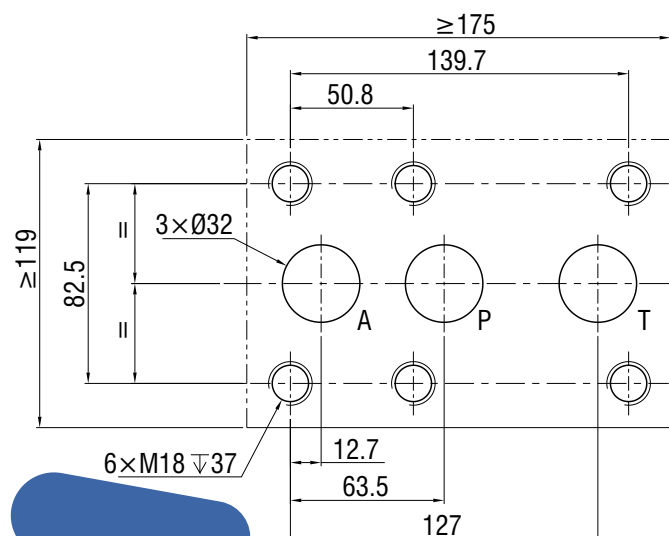


# THM HUADE HYDRAULICS PVT LTD

## Port Connection surface size



## Mounting surface size of mating parts



## Description:

1. Nameplate
2. Electromagnetic directional valve with 2 diameters of five
3. Electromagnet
4. Fault check button
5. Lock nut
6. adjustment element "1"
7. adjustment element "2"
8. screw plug (no control oil leakage this piece)



Website: [www.thmhuade.com](http://www.thmhuade.com)  
E-mail: [sales@thmhuade.com](mailto:sales@thmhuade.com)

## THM HUADE HYDRAULICS PVT LTD

Address: F-127, Phase-VIII,  
Focal Point, Ludhiana-141010  
Tel: 0161-2672777, 2672778



**THM**  
HYDRAULICS