

Type TPF2G1-M

High pressure gear pump
Flow 1.4 to 13.8cc
Maximum operating pressure 250bar
Single & Double pump



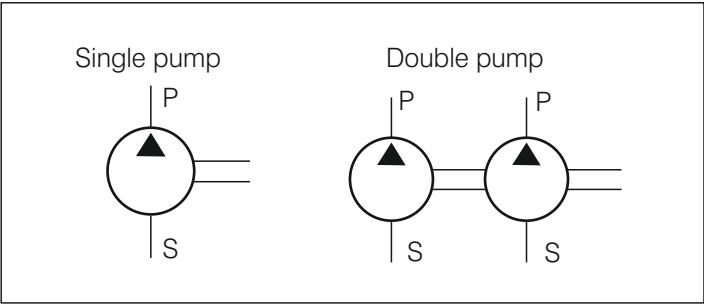
Index	Page No
• Features	02
• Symbols	02
• Ordering code	02
• Unit dimensions TPF2G1	03
• Drive Shaft	03
• Port details	03
• Performance data, Dimensions and port details	03
• Ordering Code of Double Pump	04
• Unit dimensions of double pump	05



Features

- Unique sealing design to operate up to 250 bar continuous
- Special alloy bush with unique lock design to operate up to 250 bar continuous
- Modified gear tooth to lower operating torque
- 100% testing on computerised test bench
- Long service life
- Pumps in “V” option available to operate up to -10°C and + 120°C
- “G” -BSP ports as per ISO228/1 as standard and other threaded and flange ports availble
- New principle of hydraulic gap compensation

• Symbol



Ordering code

TPF2G1-M		3X/								
Series 30 to 39			Further details							
Flow cc/rev.			R = 2 bolt flange, 50.8mm spigot Consult for any specific flange							
1.4	= 1.4		V = FKM Seals up to +120°C M = NBR Seals up to +80°C							
2.1	= 2.1									
2.8	= 2.8		01 = “G” BSP Thread ports							
3.5	= 3.5									
4.1	= 4.1		A = Parallel/ Cyl shaft ISO 12.7mm R = Splined shaft, 1/2"-9 teeth							
5.2	= 5.2									
6.2	= 6.2									
7.6	= 7.6									
9.3	= 9.3									
11.0	= 11.0									
13.8	= 13.8									
Rotation										
Clockwise rotation	= R									
Anti-clockwise	= L									
Bi-directional	= S									

- General technical parameters:
- Min. Oil cleanliness level: ISO 17/14
- Installation position: optional.
- Drive: via a flexible coupling directly driven by prime mover
- Fluid temperature range: 0° to 80°C (operating)
- Viscosity range: 8cSt to 100cSt (Recommended range)
- Operating pressure inlet: P_{abs min.} 0.24bar - P_{abs max.} 3.00bar

- Permissible torque at drive shaft:
R= Splined shaft SAE-A 5/8", T_{max} = 185 Nm
A= Parallel keyed shaft 18mm, T_{max} = 185 Nm

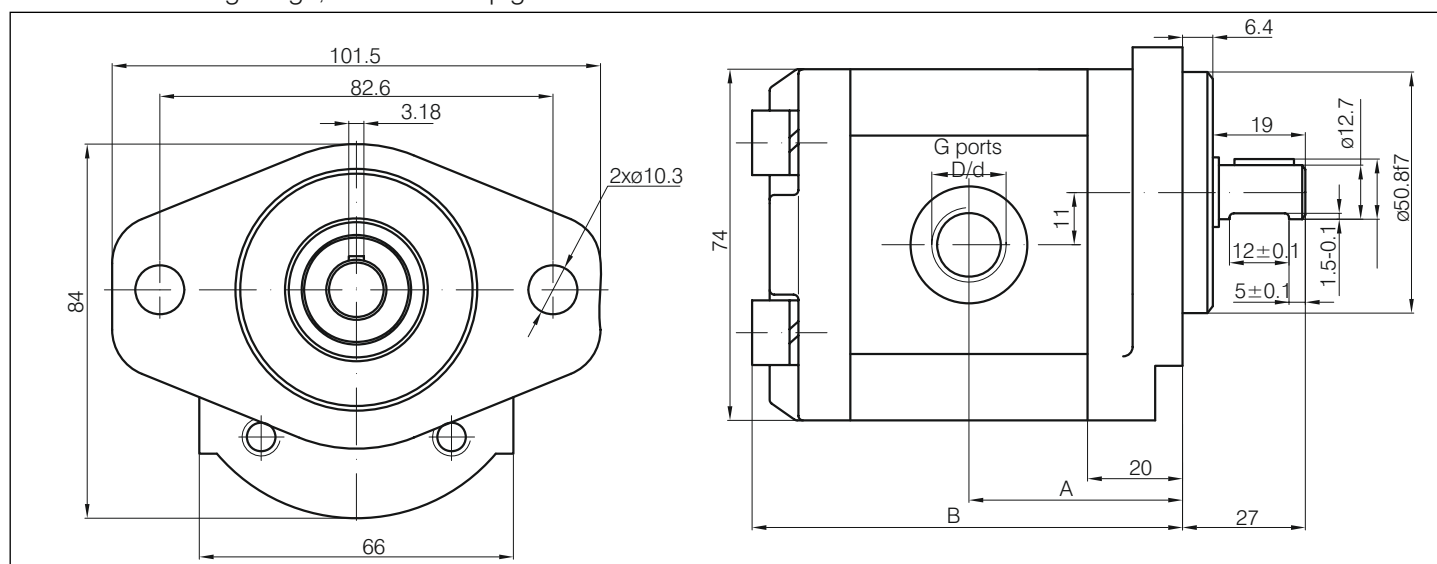


Unit dimensions TPF2G1

(dimensions in mm)

“R”

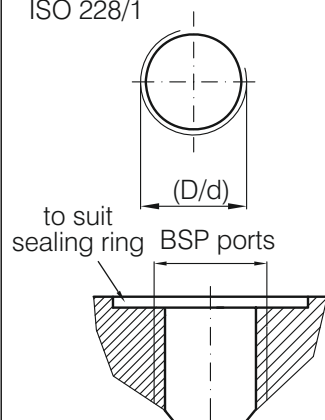
2 bolt mounting flange, 50.8mm dia spigot



Port details

“01”

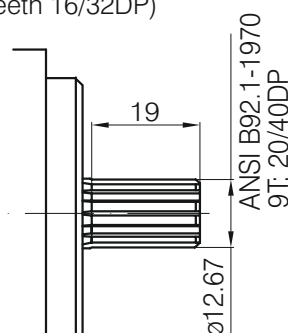
“G” BSP Thread ports as per ISO 228/1



Shaft Options

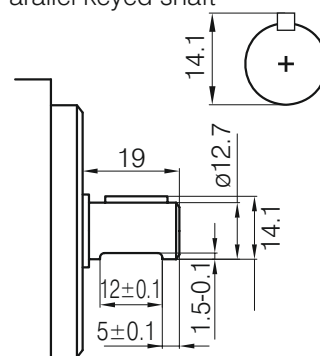
“R”

Splined shaft SAE-A 5/8"
(9 teeth 16/32DP)



“A”

Parallel keyed shaft



Performance data, Dimensions and port details

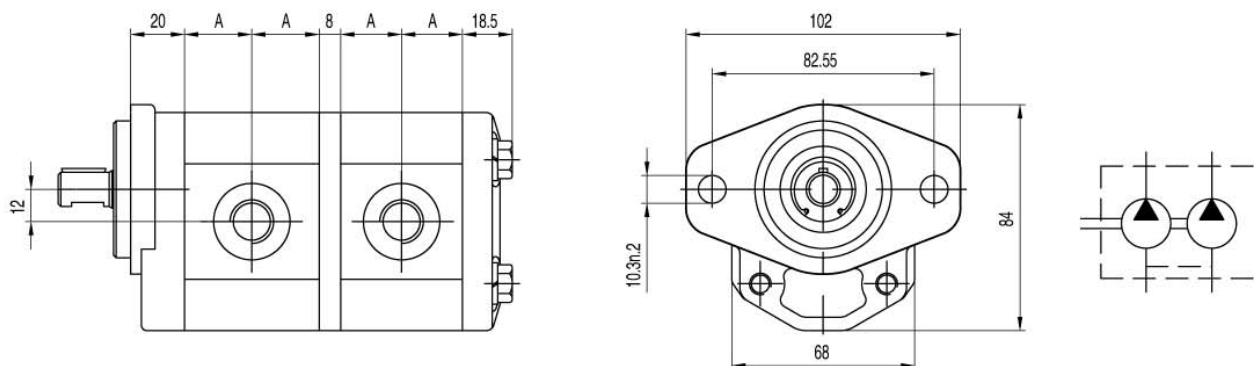
Type	Flow cc/rev	Max pressure			Max Speed r/mn	Min Speed r/mn	Dimensions			
		P1	P2	P3			B	A	"G" BSP as per ISO 228/1	
		bar	bar	bar			mm	mm	D inlet	D outlet
TPF2G1M-1.4	1.4	250	270	290	6000	800	82.5	42	1/2BSP	3/8 BSP
TPF2G1M-2.1	2.1									
TPF2G1M-2.8	2.8									
TPF2G1M-3.5	3.5									
TPF2G1M-4.1	4.1									
TPF2G1M-5.2	5.2	230	245	260	3500	600	93.5	47.5	1/2BSP	1/2 BSP
TPF2G1M-6.2	6.2						96.5	49		
TPF2G1M-7.6	7.6	200	215	230	3000		100.5	51		
TPF2G1M-9.3	9.3	180	195	210	2500		105.5	53.5		
TPF2G1M-11	11	170	185	200			110.5	56		
TPF2G1M-13.8	13.8	150	165	180	2000		118.5	60		



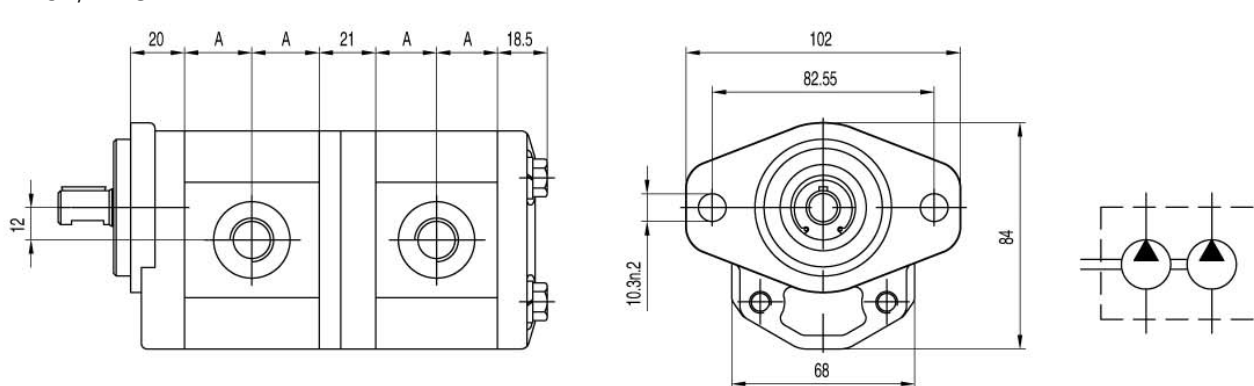
Unit Dimensions of Double Pump

(dimensions in mm)

TPF2G1/1-M3X-***-F**



TPF2G1/1-M3X-***-E**



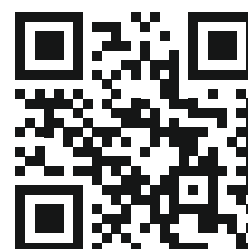
Type	Flow cc/rev	Max pressure			Max. Speed r/mn	Min. Speed r/mn	Dimensions A (mm)
		P1	P2	P3			
		bar	bar	bar			
TPF2G1/1M-1.4	1.4	250	270	290	6000	800	22
TPF2G1/1M-2.1	2.1				6000	800	23
TPF2G1/1M-2.8	2.8				5000	800	24
TPF2G1/1M-3.5	3.5				5000	800	25
TPF2G1/1M-4.1	4.1				4000	800	26
TPF2G1/1M-5.2	5.2	230	245	260	4000	800	27.5
TPF2G1/1M-6.2	6.2				3500	800	29
TPF2G1/1M-7.6	7.6	200	215	230	3000	600	31
TPF2G1/1M-9.3	9.3	180	195	210	2500	600	33.5
TPF2G1/1M-11	11	170	185	200	2500	600	36
TPF2G1/1M-13.8	13.8	150	165	180	2000	600	40

The specified data is for product description purposes only and may not be deemed to be guaranteed unless expressly confirmed in the contract.



THM Huade Hydraulics Pvt Ltd

F-127, Phase-VIII, Focal Point,
Ludhiana-141010, Punjab (INDIA)
PH: 0161-2672777, 0161-2672778
E-mail: sales@thmhuade.com
Website: www.thmhuade.com



Follow us:

