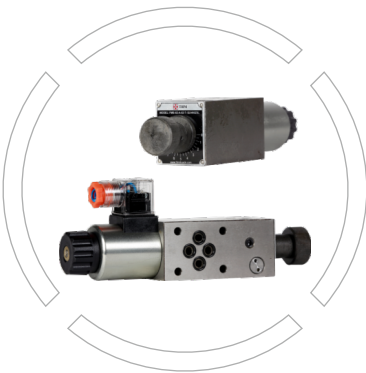


# Modular Solenoid flow control valve

Solenoid & modular type for rapid-feed applications



Index	Page No
• Introduction	02
• Symbol	02
• Ordering code	03
• Main Characteristics of Flow control units type FMS	04
• Unit Dimensions FMS-02	04

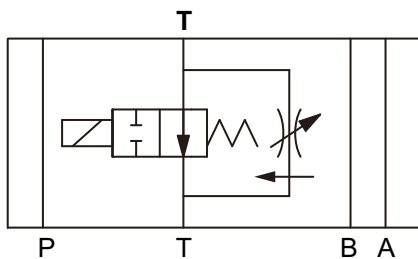


## Introduction

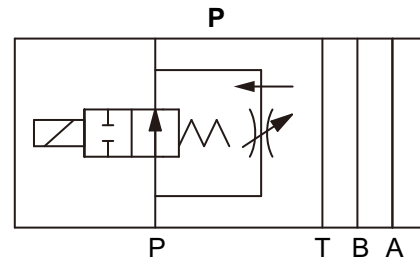
- FMS-02 is a modular units composed by one by-pass solenoid valve and one 2-way pressure compensated flow control valve type.
- The flow adjustment is obtained by turning the graduated micrometer knob. Clockwise rotation decreases the throttling (passage reduced).
- FMS-02 = ISO 4401 size 06 interface; Controlled flow up to 1, 2, 4, 8 l/min (depending on models), free flow up to 30l/min.
- Pressure up to 150 kgf/cm.
- Valves designed to operate in hydraulic systems with hydraulic mineral oil or synthetic fluid having similar lubricating characteristics.

## Symbol

Meter Out-type



Meter In-type





## Ordering code

		FMS	-	02	A	-	04	T	-	G24	N9	Z5L
<b>Model Name</b>												
Modular Solenoid Flow control valve	= FMS											
NG-06	= 02											
<b>Solenoid Appearance -</b>												
Standard Din connector type	= A											
<b>Max. Adjustable Controlled Flow</b>												
1 L/min	= 01											
2 L/min	= 02											
4 L/min	= 04											
<b>Hydraulic Circuit Type</b>												
Control of flow discharged from the actuator to port T (meter out)	= T											
Control of flow entering the actuator from port P (meter in)	= P											
<b>Power Source</b>												
AC 110V, 50/60Hz (Rectifier type)	= W110											
AC 220V, 50/60Hz (Rectifier type)	= W220											
DC 12V	= G12											
DC 24V	= G24											
With protected hand override (standard)	= N9											
<b>Individual Connections</b>												
Large angled plug with indicator light	= Z5L											



## Main Characteristics of Flow control units type FMS

Model	FMS-02
Free Flow (L/min)	30
Max. Working Pressure (kgf/cm <sup>2</sup> )	150
Max. Controllable Flow (L/min)	1, 2, 4, 8
Weight (kg)	AC Type : 2.4
	DC Type : 2.6
Assembly Position / location	Any Position
Sub-plate Surface Finishing	Roughness index Ra 0.4 - flatness ratio 0.01/100 (ISO 1101)
Ambient Temperature	-20°C + 70°C
Fluid	Hydraulic oil as per DIN 51524.....535; for other fluids see section
Recommended Velocity	15 ÷ 100 mm <sup>2</sup> /s at 40°C (ISO VG 15 ÷ 100)
Fluid Contamination Class	ISO 4401 Class 21/19/16 NAS 1638 class 10 (Filters at 25 µm valve with β <sub>25</sub> ≥ 75
Fluid Temperature	-20°C + 60°C (Standard seals and water glycol) -20°C + 80°C (PE seals)

## Unit Dimensions FMS-02

(Dimensions in mm)

