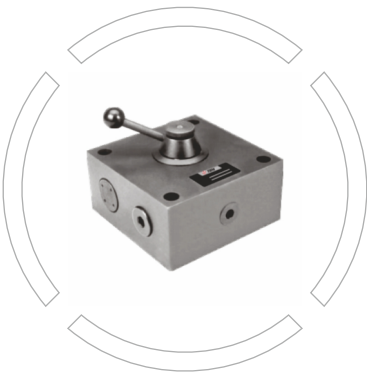


TFA

Flow control valve
Size 30
Max pressure up to 210 bar
Max flow up to 300 l/min

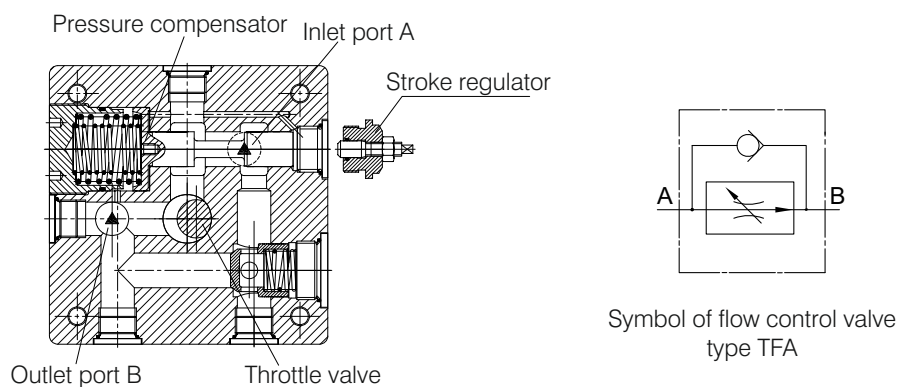


Index	Page No
• Functions and Configuration	02
• Ordering Code	02
• Technical data	03
• Unit Dimensions	04



Function and configuration

Flow control valve type TFA is two-way flow control valve, consist of pressure compensator and throttle valve in series. When fluid flow into the valve, it is reduced of pressure first and then throttled. The flow in the flow control valve is able to maintains reliable working rate independent of any impact from the changing load because of pressure compensation function provided from pressure compensator. Flow rate is adjusted by the handle regulator within the range of 120°. When appropriate flow is adjusted, the handle regulator can be locked via pinch knob while the value is shown on the scale. The pressure relief valve can be with or without stroke regulator.



Ordering code

TFA	30	E	P				*
Flow control valve							
Nominal size	= 30						
160 l/min				= 160			
250 l/min				= 250			
300 l/min				= 300			
Flow (A→B)							
Pressure Compensator, Without Stroke regulator				= No code			
Pressure Compensator, With Stroke regulator				= B			
NBR Seals					= No code		
FKM Seals					= V		
Further details in clear text							



Technical data

Fluid	Mineral oil, phosphate ester
Fluid temperature range	-20°~ +80°
Viscosity range	10~800
Viscosity range	Maximum permissible degree fluid contamination: Class 9. NAS 1638 or 20/18/15, ISO 4406
Operating pressure	210
Max pressure differential (Concerned with Q max)	5~10
Flow adjustment	unconcerned with pressure
Weight	Approx. 33

(Dimensions in mm)

- [illegible]

-
- Technical drawing of a mounting plate showing front, side, and top views with dimensions and a surface texture requirement.
- Front View (Left):** Shows a rectangular plate with overall dimensions 260 mm (width) x 200 mm (height). A central rectangular area of 160 mm x 110 mm is hatched. Dimensions include 125 mm, 25 mm, 20 mm, 160 mm, 15 mm, 60 mm, 110 mm, 160 mm, 230 mm, and 260 mm. Features include a $\Phi 25$ hole, M12 depth 25, and a $\Phi 14$ hole. Points A and B are marked.
- Side View (Middle):** Shows a rectangular plate with a width of 40 mm.
- Top View (Right):** Shows a rectangular plate with overall dimensions 230 mm (width) x 160 mm (height). A central circular area of $\Phi 190$ is indicated. Dimensions include 125 mm, 25 mm, 110 mm, 60 mm, 160 mm, and 230 mm. Features include a $\Phi D1$ hole (depth 1) and a $\Phi D2/T1$ hole. Points A and B are marked.
- Surface Texture Requirement:** A box indicates a surface texture of 0.01/100mm. A triangle with the value 0.8 indicates a requirement for the mounting surface.
- Note:** No any holes within the area of $\Phi 190$

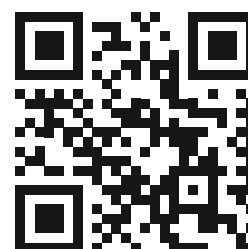
4/5

The specified data is for product description purposes only and may not be deemed to be guaranteed unless expressly confirmed in the contract.



THM Huade Hydraulics Pvt Ltd

F-127, Phase-VIII, Focal Point,
Ludhiana-141010, Punjab (INDIA)
PH: 0161-2672777, 0161-2672778
E-mail: sales@thmhuade.com
Website: www.thmhuade.com



Follow us:

